

## 2. Create Sales Return Parameter

### Create Sales Return Parameter

\_Buka link pos backend

<https://azec-appfe-ac.erajaya.com:8345/POS-Backend-prod/?config=prodErafone>

### **Login**



.: Login | Azec Soft Application

**erajaya**  
*Erajaya Group of Companies*

User Name :

Password :

☒ LDAP

Login Exit

Pilih responsibility POS BACKEND -> Submit

List Of Responsibilities

Keyword: %

Search

No	Name	Description	Company
1	Administrator	Administrator	
2	Pos Backend	Pos Backend	
3	Pos Online Eraspaces	Pos Online Eraspaces	

1

/ 1

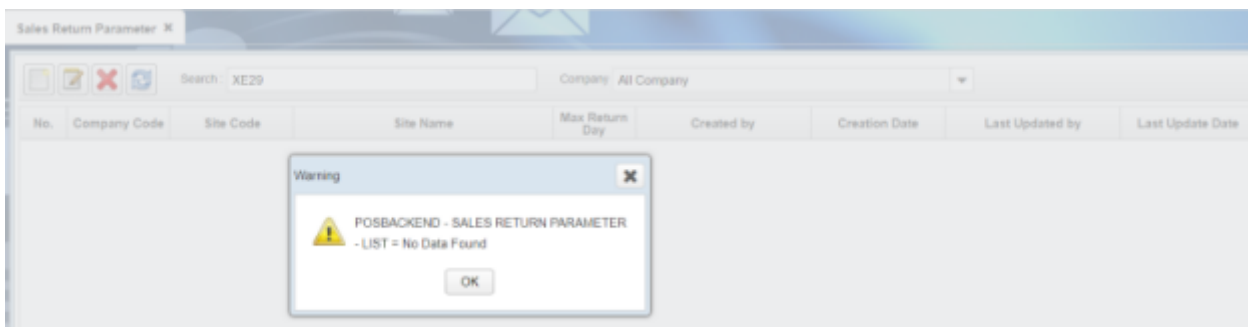
Submit
Cancel

Pilih menu “**Sales Return Parameter**”

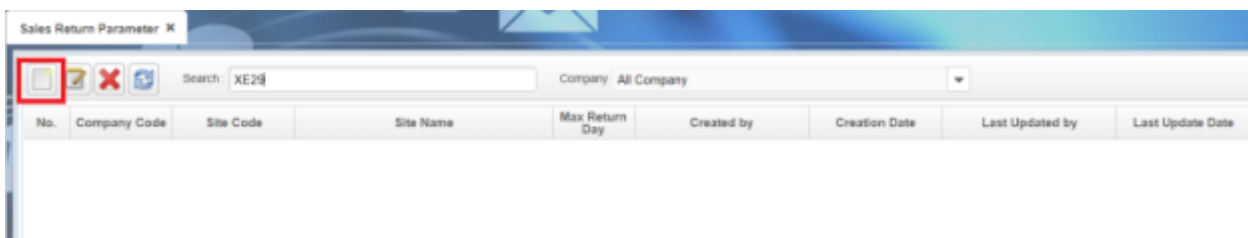


Sebelumnya pastikan dulu dengan cara search,bahwa plant yang ingin di create

Sales Return Parameter nya belum ter-create.

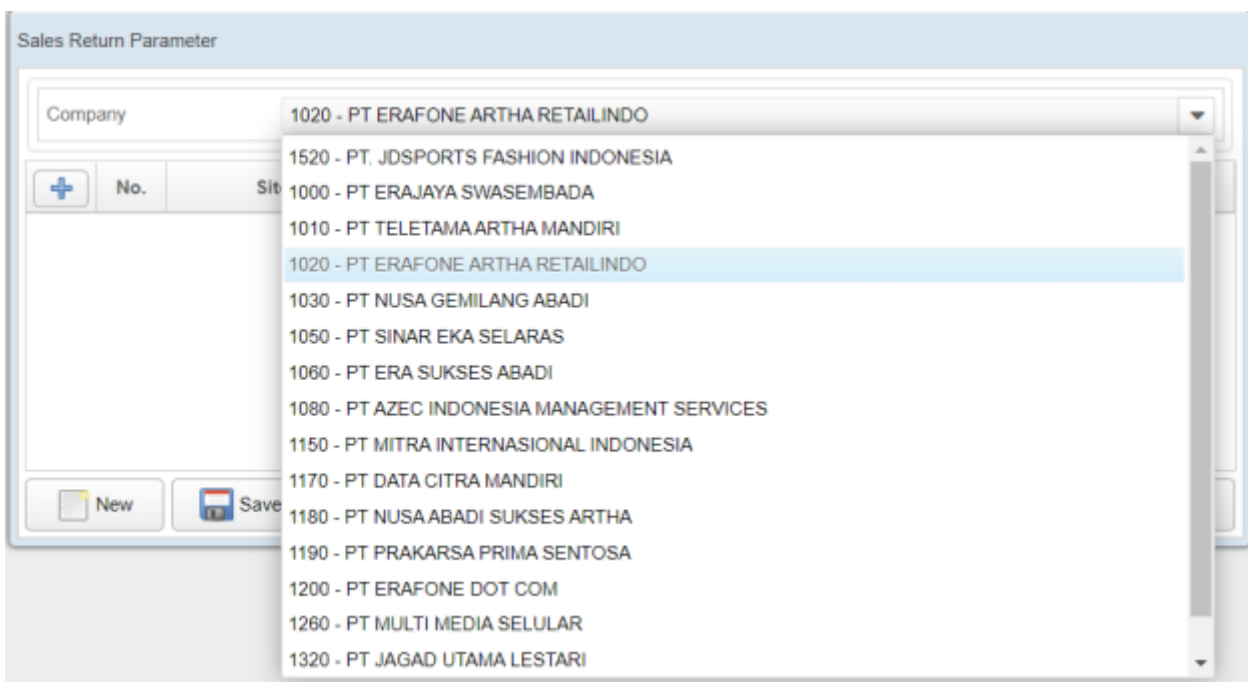


Setelah di pastikan belum ada,klik icon NEW di pojok kiri atas



Akan muncul tampilan berikut

Pada field “Company” pilih PT / Company Code dimana plant/site tersebut terdaftar



Kemudian klik icon +

Sales Return Parameter

Company: 1020 - PT ERAFONE ARTHA RETAILINDO


	No.	Site Code	Site Name	Max Return Day	Message
					

New Save Close

Isi Max Return Day normal sesuai PT, kemudian klik Save.

Sales Return Parameter

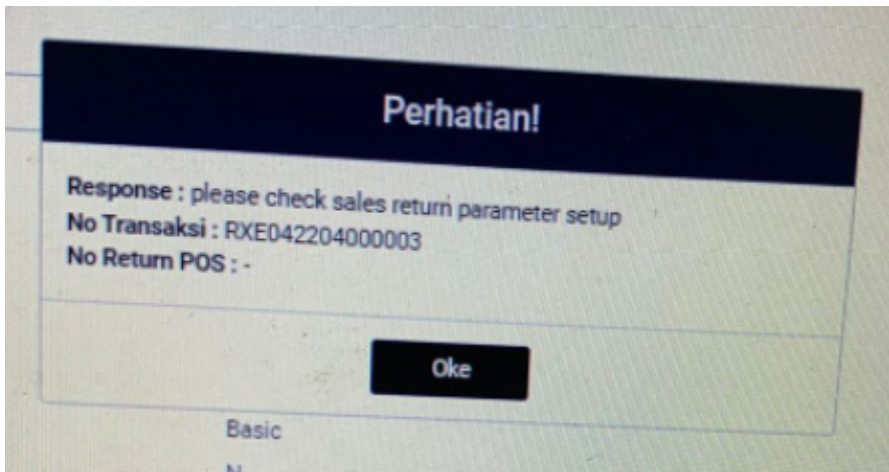
Company: 1020 - PT ERAFONE ARTHA RETAILINDO

	No.	Site Code	Site Name	Max Return Day	Message
	1	E340	ERAFONE SUZUYA MEULABOH - MEULABOH	2	

New Save Close

**Selesai.**

Apabila **Sales Return Parameter** ini belum di create, maka pada saat proses Rj akan muncul error seperti berikut :



---

Revision #1

Created Tue, May 24, 2022 8:40 AM by [Dono Nurcahyo](#)

Updated Tue, May 24, 2022 8:45 AM by [Dono Nurcahyo](#)