

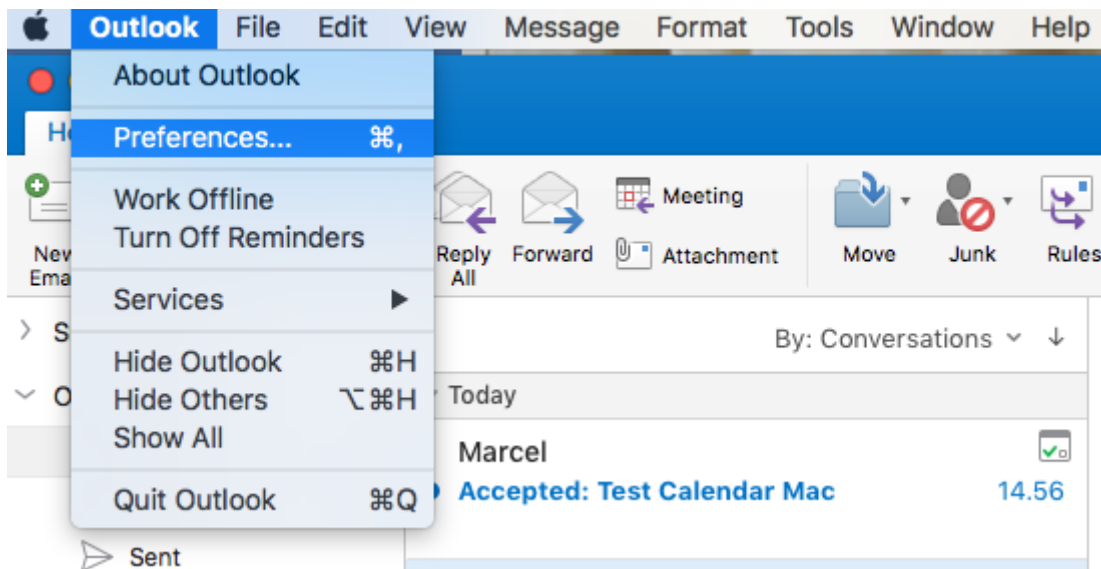
Import Contact from LDAP - Outlook

Setting contact LDAP

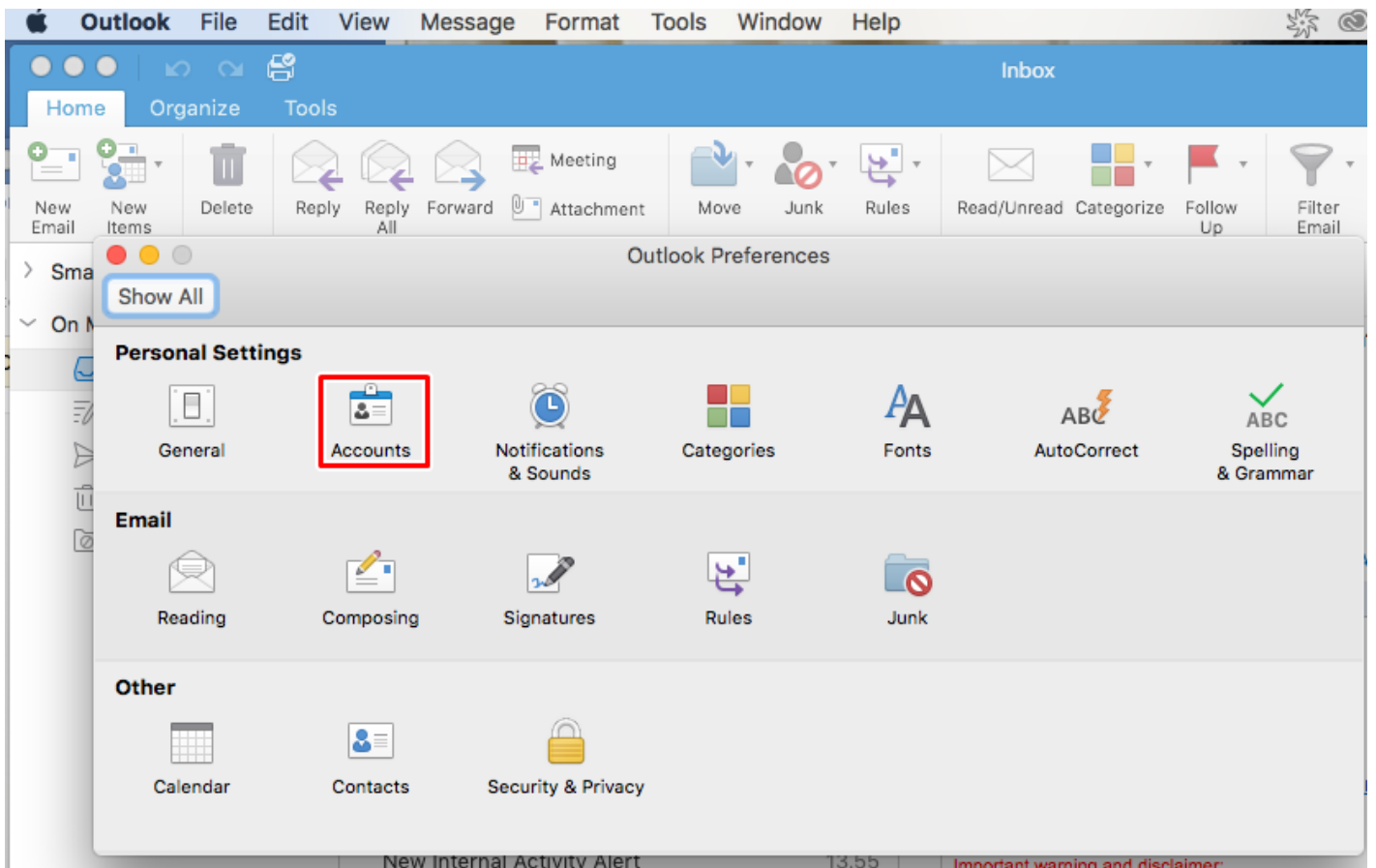
1. Open Outlook.app.



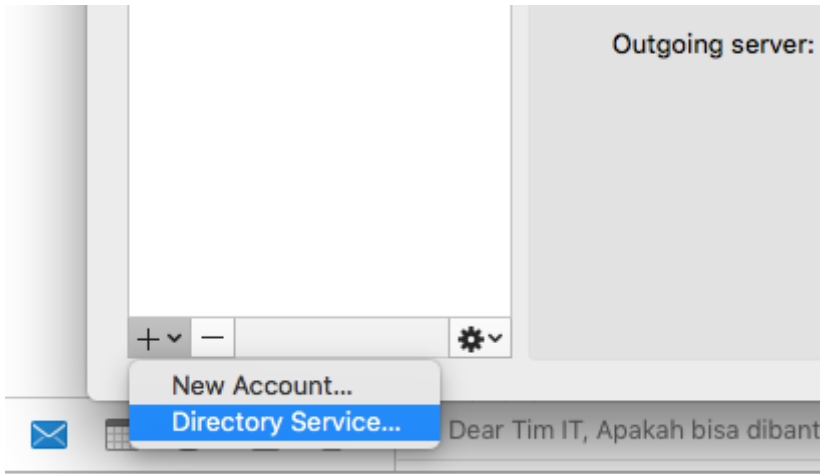
2. Select "Outlook" program menu dan klik "Preferences".



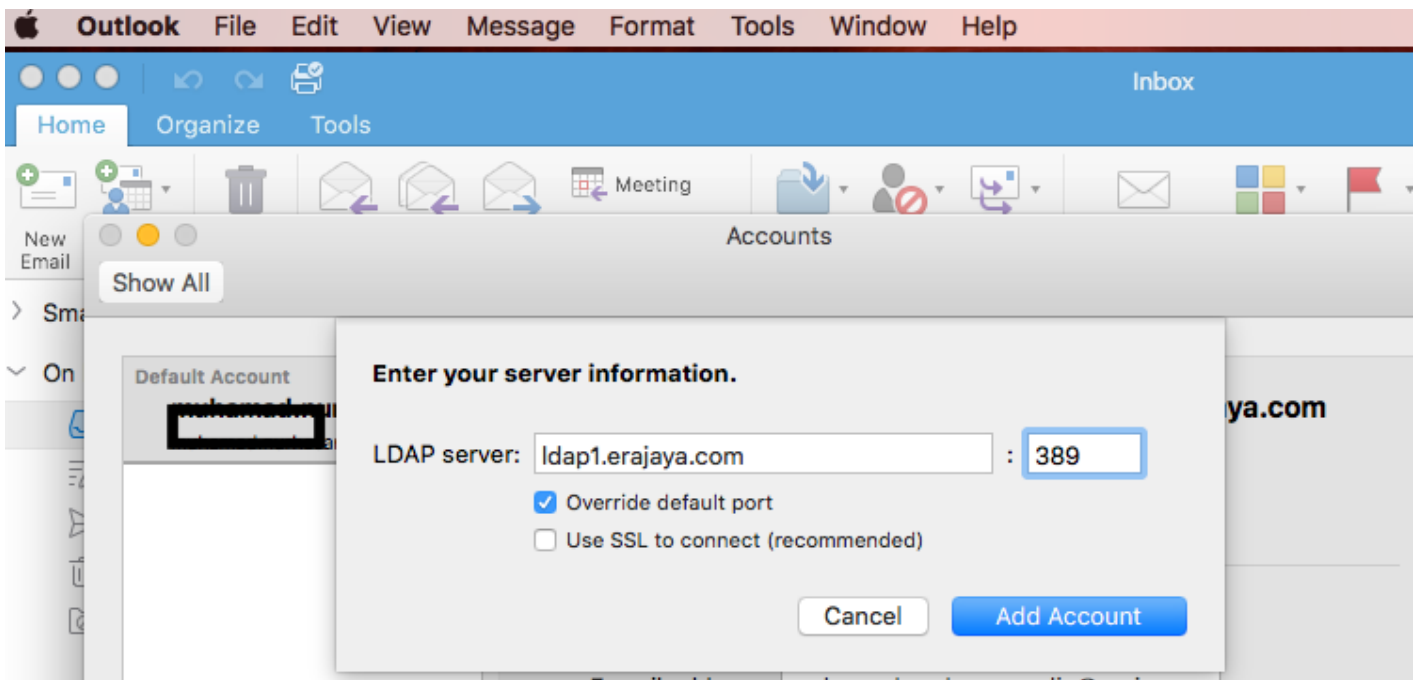
3. Kemudian pilih "Account".



4. Kemudian pilih "+" -> "Directory service....".



5. Akan muncul form sebagai berikut.

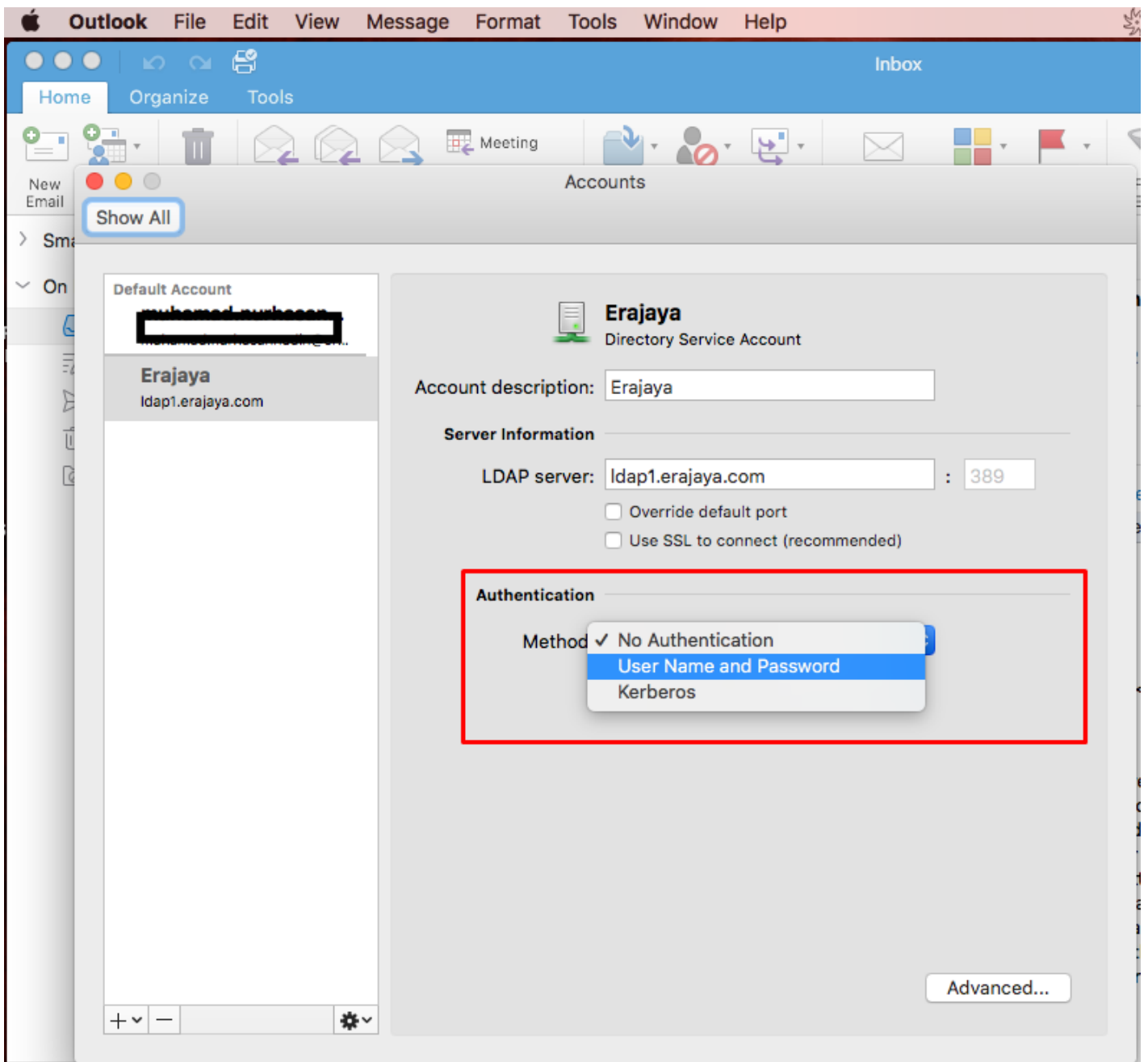


Isi *LDAP Server* : ldap1.erajaya.com

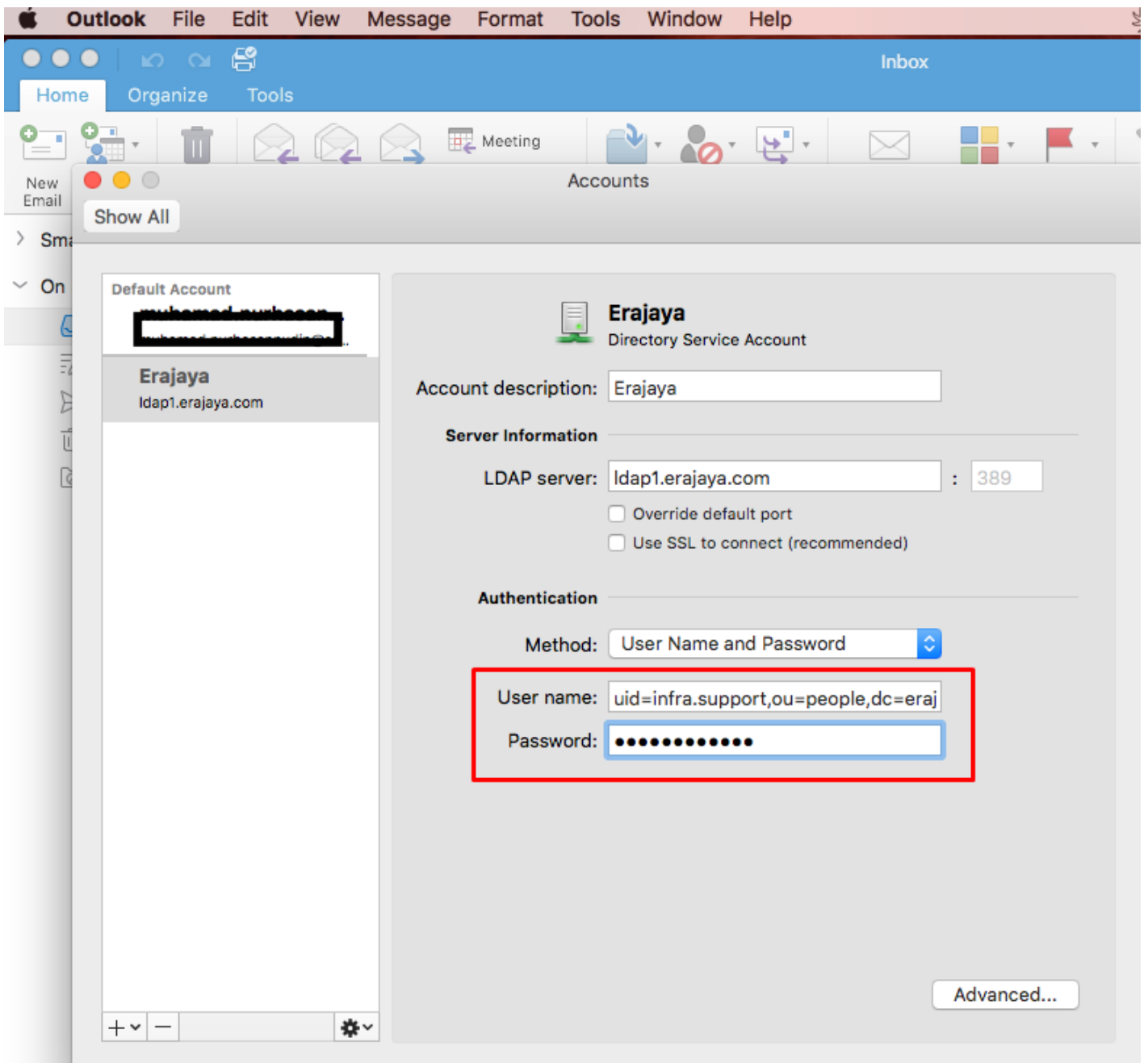
Centang *Override default port* dan isikan 389

Uncheck *Use SSL to connect (recommended)*

5. Pilih Authentication : "User Name and Password".



6. Akan muncul kolom User Name dan Password.

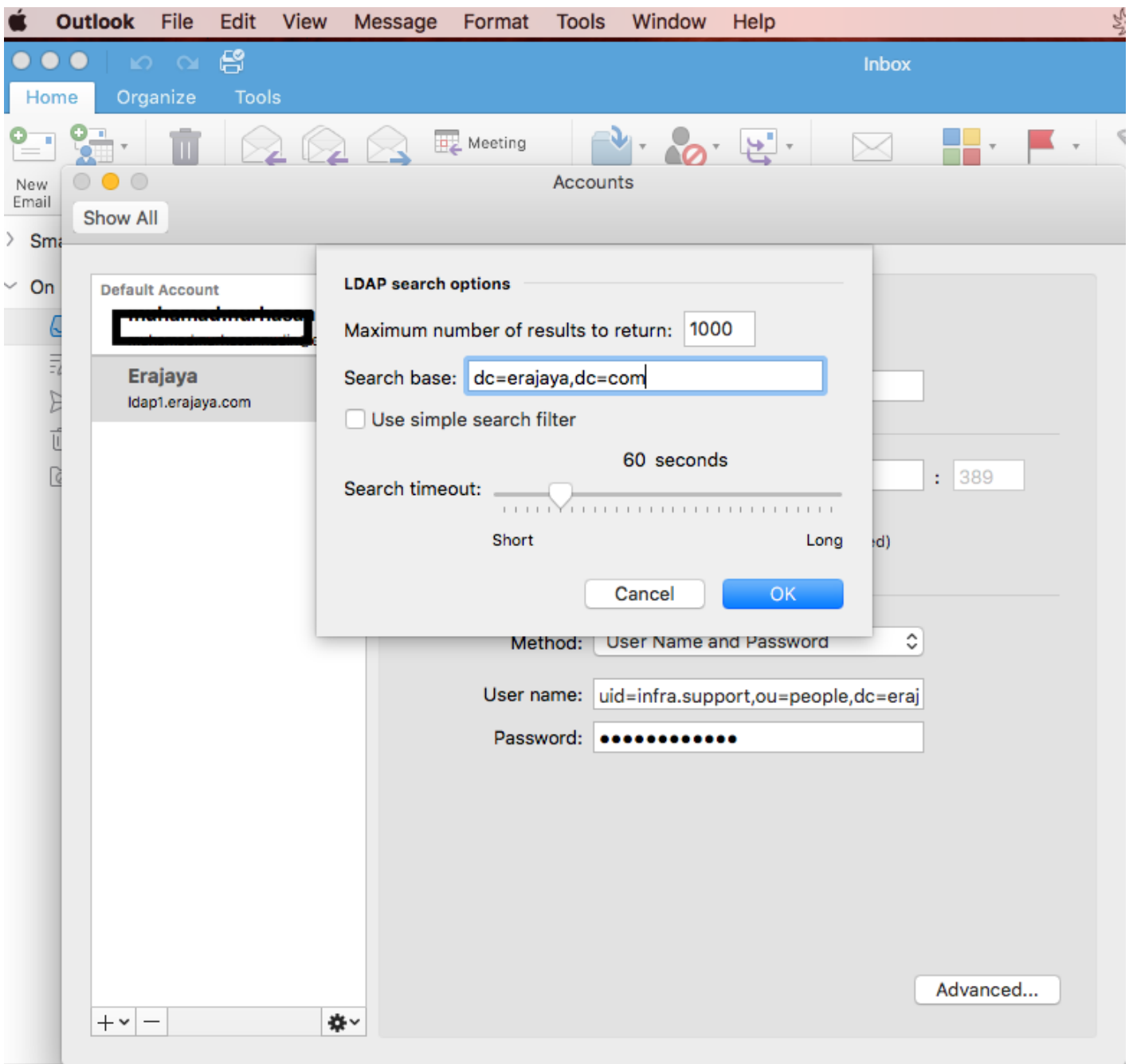


User Name	uid=email.anda,ou=people,dc=erajaya,dc=com
Password	Masukkan password email corporate Anda

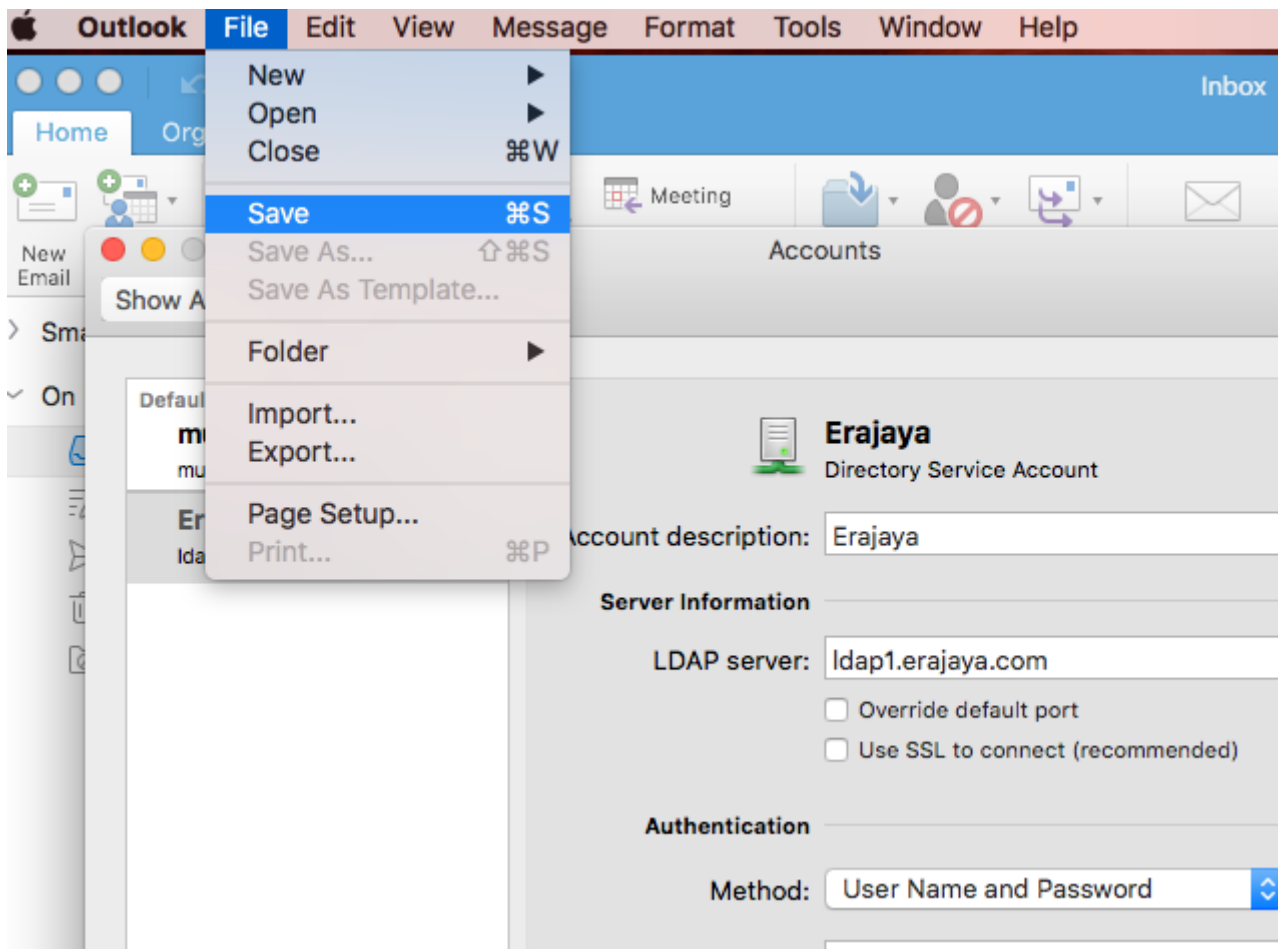
Lalu klik tombol **Advanced**.

7. Akan muncul seperti gambar dibawah ini, masukkan ke kolom *Search base* : dc=erajaya,dc=com.

Lalu klik **OK**.



8. Setelah selesai, klik menu "File" lalu pilih "Save" untuk menyimpan.



Revision #1

Created Tue, Jan 19, 2021 10:44 AM by [Admin](#)

Updated Thu, Jan 28, 2021 2:44 PM by [Admin](#)